

# urbaine

D E S I G N G R O U P

Urbaine Design Group Pty Ltd, 19c / 74, The Corso, Manly, NSW 2095

---

**Planning Proposal: 4 Delmar & 812 Pittwater Rd**

**Visual Impact Images, May, 2023**

---



## Camera positions

## VISUAL IMPACT IMAGES OF THE PROPOSED DEVELOPMENT.

Visual Impact Images from 4 viewpoint locations – in and around the Stoney Range Regional Botanic Gardens and environs within the visual context of the subject site.

In order to allow an assessment of the visual impact, photos were selected that represented relevant viewing locations from the specific locations likely to be affected.

A Canon EOS Full Frame Digital Camera with fixed focal length 24mm lens was used to take all viewpoint photos, at an eye level of 1600mm. This was tripod-mounted and leveled for single frame and multiple frame combination for panorama images to show a wider context and field of view, close to human eyes.

The photos include location within the site map and additionally, information is supplied for each location in Appendix A. In line with the Land and Environment Court Guidelines for the Preparation of Photomontages, all the camera positions were surveyed for height and location. See Appendix A

In conjunction with photogrammetry, lidar point cloud, survey DWG by Norton Survey Partner, surveyors and land title consultants and camera position data we were able to build a digital scene and accurately place the proposed building and check the position using multiple data sources.



## Viewpoint no.01



P03 IMG\_0023.jpg

### Existing site photo - static private viewpoint

---

**RL + 38.85m**

Distance to site boundary: 36.37 Distance to centre of site: 106.7m



P03 IMG\_0023 c.jpg

### Photomontage of new proposal

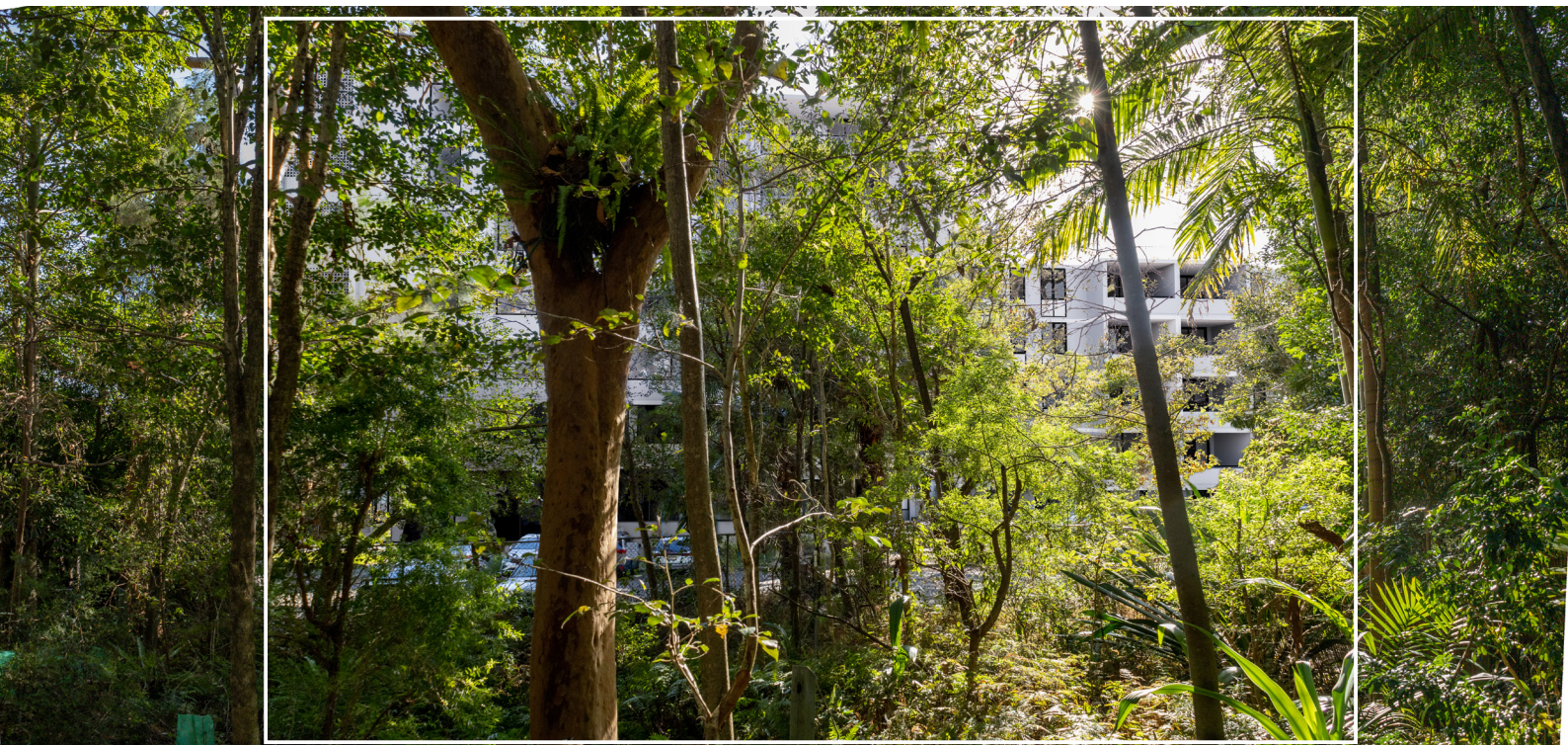
---





P03 IMG\_0023 d.jpg

Visual impact in cyan with red outline



Panorama to show wider viewpoint of human eyes with nested photomontage in white frame



## Viewpoint no.02



P04 IMG\_0030.jpg

**Existing site photo - static private viewpoint**

---

**RL + 35.176m**

Distance to site boundary: 37.4m    Distance to centre of site: 110.52m



P04 IMG\_0030 c.jpg

**Photomontage of new proposal**

---





P04 IMG\_0030 d.jpg

Visual impact in cyan with red outline



Panorama to show wider viewpoint of human eyes with nested photomontage in white frame



**Viewpoint no.03**



P07 IMG\_0069.jpg

**Existing site photo - static private viewpoint**

---

**RL + 40.48m**

Distance to site boundary: 23.02m    Distance to centre of site: 82.63m



P07 IMG\_0069 c.jpg

**Photomontage of new proposal**

---





P07 IMG\_0069 d.jpg

Visual impact in cyan with red outline



Panorama to show wider viewpoint of human eyes with nested photomontage in white frame



**Viewpoint no.04**



P09 IMG\_0084.jpg

**Existing site photo - static private viewpoint**

**RL + 42.735m**

Distance to site boundary: 32.81m    Distance to centre of site: 106.447m



P09 IMG\_0084 c.jpg

**Photomontage of new proposal**





P09 IMG\_0084 d.jpg

Visual impact in cyan with red outline



Panorama to show wider viewpoint of human eyes with nested photomontage in white frame



## Viewpoint no.05

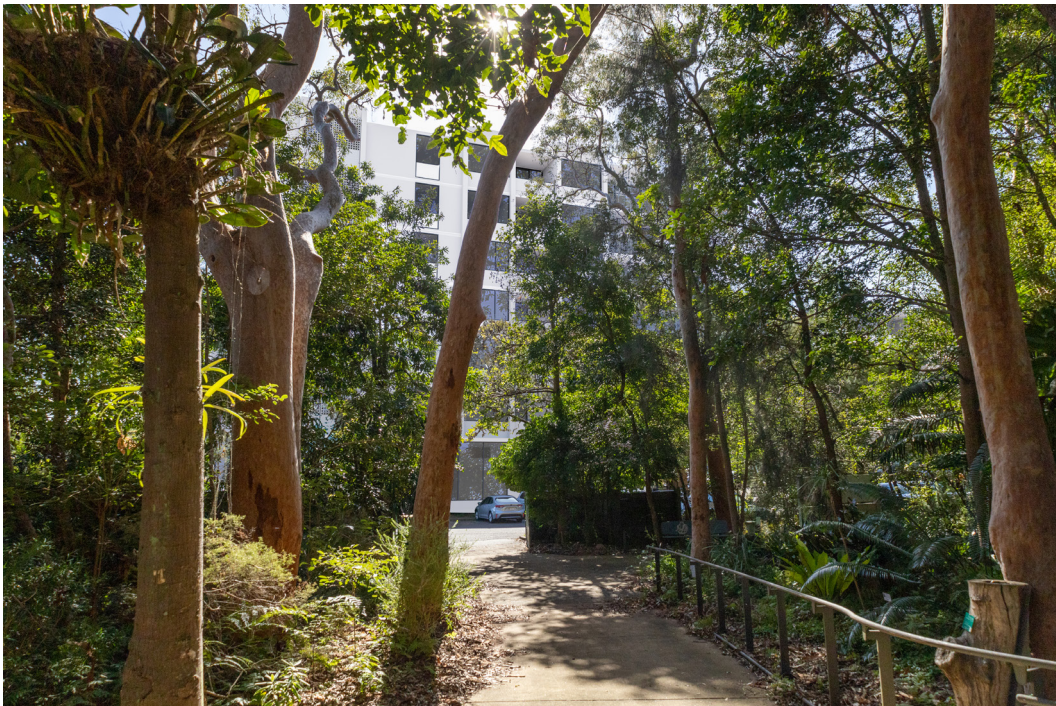


P20 IMG\_0177.jpg

### Existing site photo - static private viewpoint

**RL + 37.065m**

Distance to site boundary: 44.04m    Distance to centre of site: 128.44m



P20 IMG\_0177 c.jpg

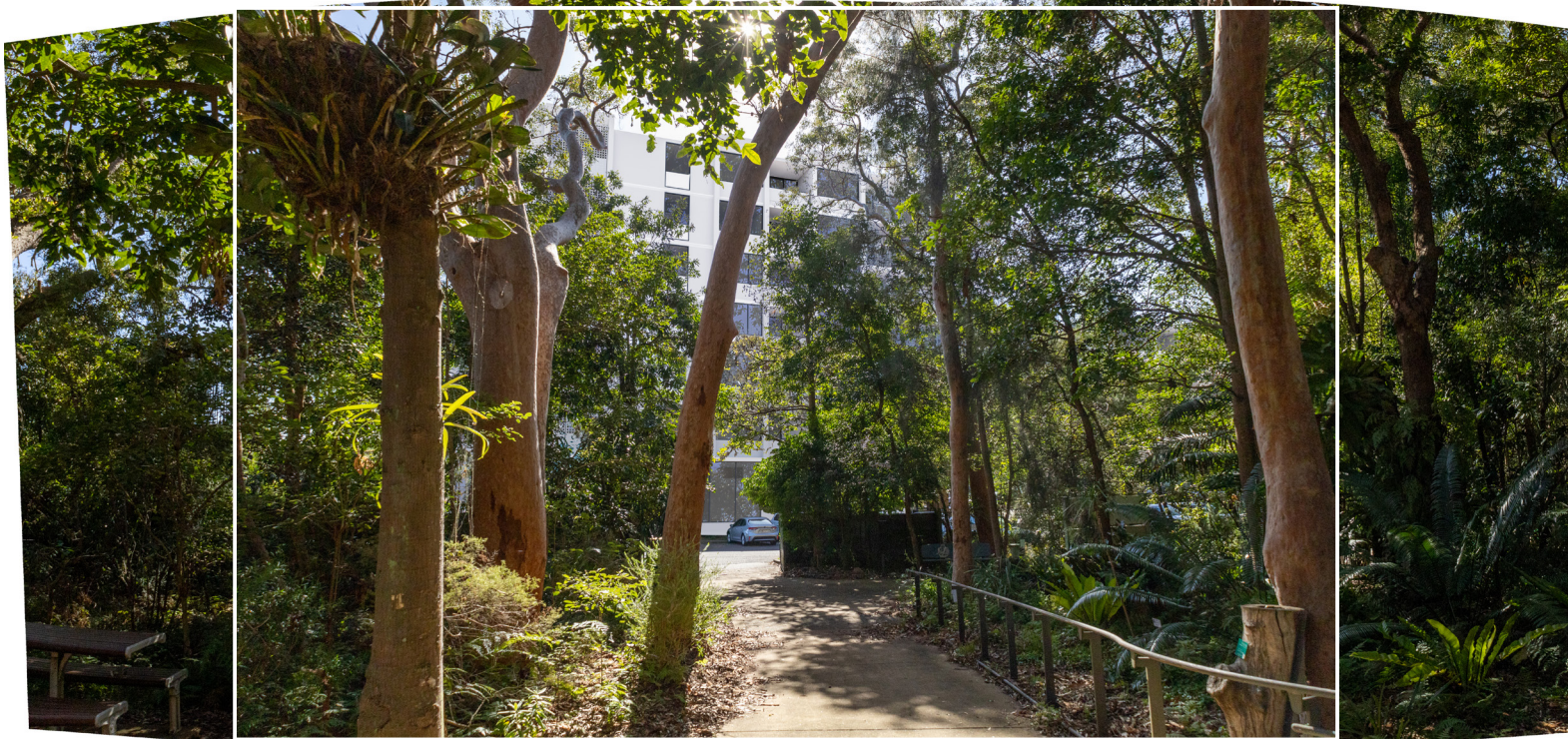
### Photomontage of new proposal





P20 IMG\_0177 d.jpg

Visual impact in cyan with red outline



Panorama to show wider viewpoint of human eyes with nested photomontage in white frame



**Viewpoint no.06**



P25 IMG\_0210 a.jpg

**Existing site photo - static private viewpoint**

**RL + 41.85m**

Distance to site boundary: 88.46m    Distance to centre of site: 196.50m



P25 IMG\_0210 c.jpg

**Photomontage of new proposal**





P25 IMG\_0210 d.jpg

Visual impact in cyan with red outline



Panorama to show wider viewpoint of human eyes with nested photomontage in white frame



Additional viewpoints

---



## Viewpoint no.07



P10 IMG\_0093.jpg

### Site photo

---

**RL + 44.357m**

Distance to site boundary: 46.12m    Distance to centre of site: 120.09m

## Viewpoint no.08



P11 IMG\_0100.jpg

### Site photo

---

**RL + 42.704m**

Distance to site boundary: 23.155m    Distance to centre of site: 32.664m



## Viewpoint no.09



P13 IMG\_0120.jpg

### Site photo

---

**RL + 50.119m**

Distance to site boundary: 73.11m    Distance to centre of site: 143.52m

## Viewpoint no.10



P16 IMG\_0140.jpg

### Site photo

---

**RL + 53.455m**

Distance to site boundary: 120.96m    Distance to centre of site: 179.25m



## Viewpoint no.11



P18 IMG\_0159.jpg

### Site photo

---

**RL + 41.862m**

Distance to site boundary: 105.26m    Distance to centre of site: 161.43m

## Viewpoint no.12



P19 IMG\_0171.jpg

### Site photo

---

**RL + 36.323m**

Distance to site boundary: 70.42m    Distance to centre of site: 134.06m



## APPENDIX A

---

Position data



CAMERA POSITIONS - GDA 2020 AT STANDING HEIGHT (1.6M)

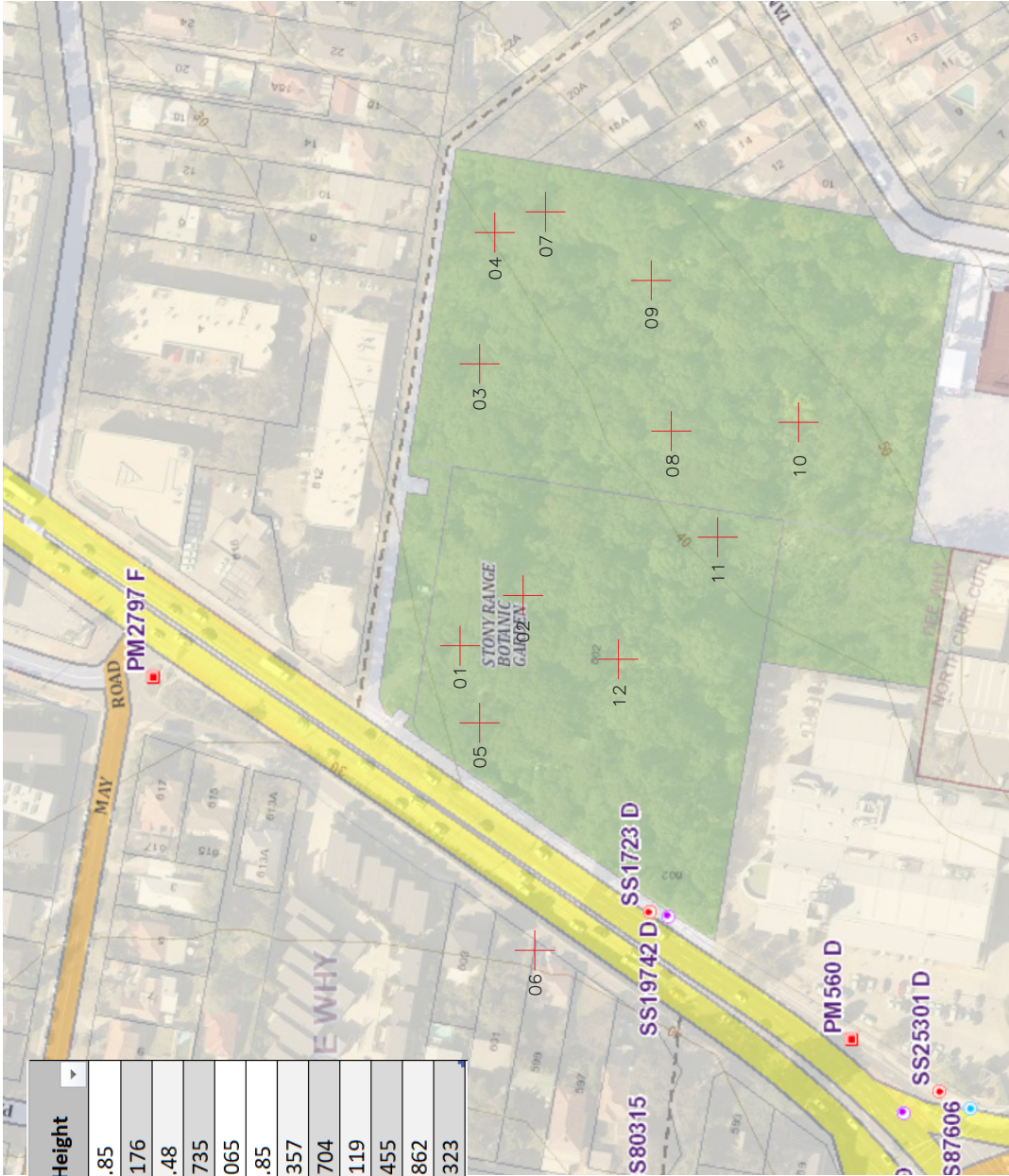
Position	Easting	Northing	AHD Height
1	340930.441	6263427.136	38.85
2	340946.894	6263406.684	35.176
3	341011.944	6263424.563	40.48
4	341056.585	6263416.926	42.735
5	340905.288	6263421.036	37.065
6	340833.68	6263402.977	41.85
7	341063.711	6263403.841	44.357
8	340995.52	6263361.57	42.704
9	341043.062	6263369.403	50.119
10	340997.193	6263325.893	53.455
11	340963.778	6263347.358	41.862
12	340899.232	6263422.626	36.323

NOTE:

BUILDING POSITIONS ARE INDICATIVE FOR PRESENTATION PURPOSES.  
DATA WAS CAPTURED USING RTK ROVER

CAMERA POSITIONS ARE FROM GNSS WITH NTRIP CORRECTIONS  
OBSERVATIONS WITHIN +/- 0.05M.  
LEVELS ARE BASED ON AUSTRALIAN HEIGHT DATUM (AHD)  
USING PM7381AND PM2797

SKETCH PLAN SHOWING  
INDICATIVE CAMERA POSITIONS FOR -  
4 Delmar & 812 Pittwater Rd



JOB NO	LGA: Norther Beaches Council
DATE: 18.05.2023	DATUM: AHD
DRAWN: DK	SCALE:
CHECK: JA	SHEET: 1:1